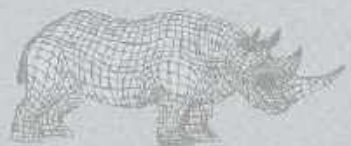




Hard Shell

Rapid Action Protection Shell Plus (RAPS Plus) Helmet



Hard Shell

OVERVIEW

A lighter helmet with no lip or ear coverage especially designed for SWAT Teams and Special Services to ensure maximum flexibility and comfort. Helmet is designed to protect against fragments / shrapnel and other ballistic threats with improved comfort.



Hard Shell

OPTIONAL ACCESSORIES

COLORS

Helmet Bag
 Bungee cord
 Velcro
 NVD Mount
 NVG Shroud
 Picatinny Rail Adaptor

Urban Tan
 Foliage Green
 Multi Cam
 Desert Marpat
 Black
 (can be customized as per requirement)

FEATURES

- # High cut shell made of a hybrid composite of Carbon, Uni-directional Polyethylene, and Woven Aramid.
- # Raised ear cut allows for integration with communications headsets.
- # Features an Hard Shell 3-Point rhino Shroud for universal capability with most NVG mounts, Accessory Rail Connectors (ARCs) with hook bungees, and external loop.
- # Scalable design allows for compatibility with Hard Shell visors, mandibles, handgun face shields, and ballistic appliques.
- # Available with four suspension/retention options.

SUSPENSION & RETENTION OPTIONS

- # The Hard Shell Liner provides one-piece full coverage impact layer with modular pads, designed for shockwave attenuation. Available in two retention options: Hard Shell Liner with Worm Dial Fitband and, Head-Loc 4-Point Chinstrap which features a quick adjustment in a low profile fitband and Hard Shell Liner with H-Nape, Head Loc 4-Point Chinstrap, a traditional retention system option designed to support heavier NVGs (PVS-15 and ANVis-9) worn during rigorous activities.
- # The EPP pads provide a light-weight multi-impact, ventilated liner using comfort foam. Available in two retention options: EPP Pads with Worm Dial Fitband, Head-Loc 4-Point Chinstrap, which features a quick adjustment in a low profile fitband and EPP Pads with OCC-Dial Fitband, Head-Loc 4-Point Chinstrap with replaceable leather front, nape, and side pads that quickly detach to allow convenient donning and doffing of communication headset with internal headbands.

PROTECTION LEVEL

PROJECTILE	FPS MINIMUM
9 mm FMJ RN (V0 at 0°	1,450 FPS WITH (MAX) BACK FACE DEFORMATION OF 16.0 MM (RIGHT LEFT AND CROWN) AND 25.4MM (FRONT AND BACK)



Hard Shell



COVERAGE & WEIGHT

HEAD SIZE	SMALL	MEDIUM	LARGE	X-LARGE
COVERAGE AREA	950 CM ²	1020 CM ²	1100 CM ²	(1200 CM ²)
SHELL WEIGHT (SHELL WITH PAINT AND EDGE BAND)	850 GRAM	950 GRAM	1050 GRAM	1150 GRAM

HELMET SHELL WITH SUSPENSION/RETENTION

SUSPENSION/ RETENTION OPTION	SMALL	MEDIUM	LARGE	X-LARGE
IMPACT LINER WITH COMFORT PADS	1200 GRAM	1250 GRAM	1300 GRAM	1400 GRAM

Note: There is tolerance of +/- 5% on all measurements and weight.

WARRANTY

5 year performance warranty on Helmet Shell
(Subject to usage conditions)

