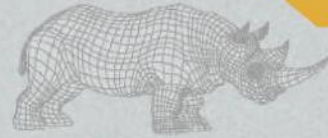




Hard Shell



HARD ARMOUR PANEL- 2.65 kg



Hard Shell



OVERVIEW

The Hard armour plate is used in conjunction with (ICW) Level IIIA soft armour panel for enhanced protection against Armour piercing rounds. This hard armour insert plate is engineered with proven technology providing comfort and protection against LEVEL IV.



Hard Shell

WEIGHT

2.65 Kg \pm 5%

SIZES

10"x12"

FEATURES

Composite hard armour plate made of ceramic tile backed with Aramid material.

Containment of spall, debris and residues after ballistic impact.

Designed to withstand Armour Piercing bullets projectiles (in conjunction with NIJ Level IIIA Soft Armour Panel).

Weather resistant.

Temperature and Shock resistant designed for the harshest conditions.

Multi Curved/Single Curved to fit to body contour.

Fluid resistant when exposed to diesel fuel, oil and salt water.

Fungus and Microbial growth resistance.

Covered with hardware PU Coated black fabric.

PROTECTION AGAINST

7.62 x 39 mm AP (Six Shots)

7.62 X 51 NATO (Six Shots)

7.62 x 63 AP (Single Shots)

PROTECTION LEVEL

NIJ Level IV

WARRANTY

10 years performance warranty on hard armour panel.
(Subject to usage conditions)



Hard Shell

