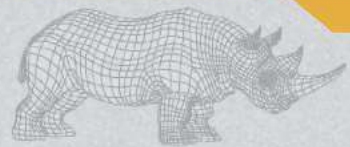


**Hard Shell**

# HARD ARMOUR PANEL- 2.9 kg



**Hard Shell**



## OVERVIEW

The Hard armour plate is to be worn as a combination plate (ICW) in Conjunction with IIIA soft armour for enhanced protection. This hard armour insert plate is designed using proven technology giving the wearer excellent comfort and protection against Level III.



**Hard Shell**

## WEIGHT

## SIZES

2.9 Kg ±5%

10"x12"

## FEATURES

Hard armour plate made of Ceramic tile and Composite material backing

Containment of spall, debris and residues after ballistic impact.

Designed to withstand Armour Piercing bullets projectiles (in conjunction with NIJ Level IIIA Soft Armour Panel).

Multi Curved/Single Curved to fit to body contour.

Weather resistant designed for the harshest conditions

High altitude pressure resistance

Fluid resistant when exposed to diesel fuel, oil and salt water.

Fungus and Microbial growth resistance.

Covered with hardware PU Coated black fabric.

## PROTECTION AGAINST

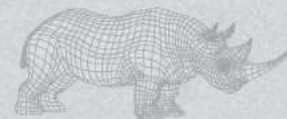
## PROTECTION LEVEL

7.62 x 51mm (NATO Ball Round)  
7.62x39 AK47 (Mild Steel Core)

NIJ Level III

## WARRANTY

10 years performance warranty on hard armour panel.  
(Subject to usage conditions)



**Hard Shell**

