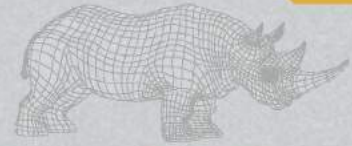




Hard Shell



SCALABLE PLATE CARRIER VX-200



Hard Shell



OVERVIEW

The VX-200, an advanced design that offers increased coverage and load carrying capability while maintaining a fully scalable solution for operators and first responders.

OPTIONS

- Level IIIA NIJ .06 Certified Soft Armor
- L-III/IV In Conjunction Plates
- L-III/IV Stand Alone Plates

- L-III A Ballistic Groin
- L-III A Ballistic Biceps
- Mission Specific Pouches
- I.D. Placards



Hard Shell

SIZES

X-Small - 5XLarge

CAMO PATTERNS

Desert Camo
Digital Desert Camo
Jungle Camo
Urban Camo

FEATURES

Ergonomic Design Optimizes 360° Range of Motion while providing Full Side Protection
Size Specific to Wearer
Provides for Front and Rear Hard Armor Plate Pockets Accept Either an 8"X10" or 10"X12"
Hard Armor Plate
Provides for Front, Rear and Side Soft Armor
Has Full Molle Front, Rear and Side Attachment Points
Fast-Entry Side Closure System
High Abrasion Resistant Nylon Outer
Body Side Mesh Lining



Hard Shell

