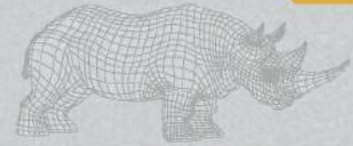




Hard Shell



K9 BALLISTIC VEST



Hard Shell



OVERVIEW

This design puts mission and K9 first. Less bulky thus reduces stress, while increasing "optimal working time" and is handler feature-rich. **"Your K9 Partner Always Has Your 6"**

FEATURES

- Provides an Optimum Coverage Platform OCP
- Reduces K9 Fatigue and Heat Stress
- Optimizes Range of Motion



- Promotes Longer Peak Performance Time
- Protects "Vitals"
- Limited Molle/PALS Attachment Points
- Heavy Duty D-Ring Lead Attachment
- Robust Hand Control Grips
- Light weight 500 Denier nylon construction

